

# Getting Started with the **PRA Plus**

**The Perinatal Risk Assessment Plus (PRA Plus)** is an efficient way to collect a complete medical history for your prenatal patients. **The PRA Plus** streamlines office procedures and ensures that patients get the referrals they need – **fast**.

## Reduces New Patient Paperwork

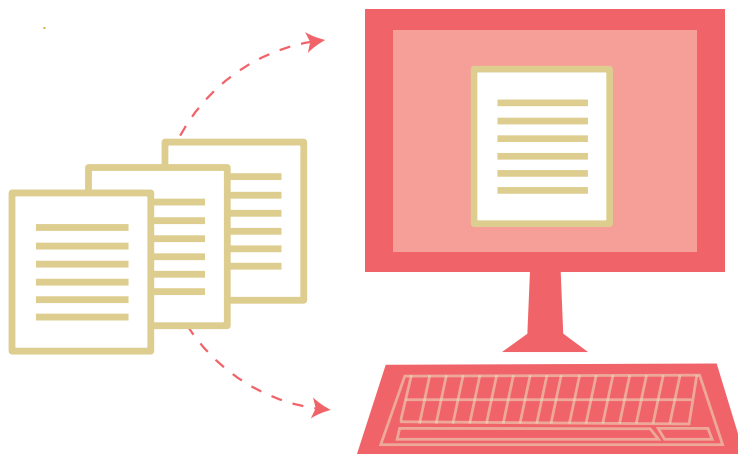
*One form to screen and connect patients to resources.*

Includes the clinically-validated 4Ps Plus tool for tobacco, alcohol, illicit drugs, depression, and domestic violence. Efficiently screens all pregnant women to treat substance use like any other medical condition.

Screens all patients for prematurity risk factors and eligibility for 17P therapy.

Easily connects your patients to services that improve outcomes for both mom and baby by automating referrals for optional community based services and tobacco cessation support.

Due to take effect in May 2020, PRA Plus meets NJ Screening Law for all uninsured, Medicaid presumptive eligibility, and Medicaid eligible prenatal patients.



## Get a Complete Picture of Patients' Needs

Tracks all your patients and reveals trends in high-risk behaviors and other risks.

Reviews risk snapshots at first prenatal visit and third trimester update.

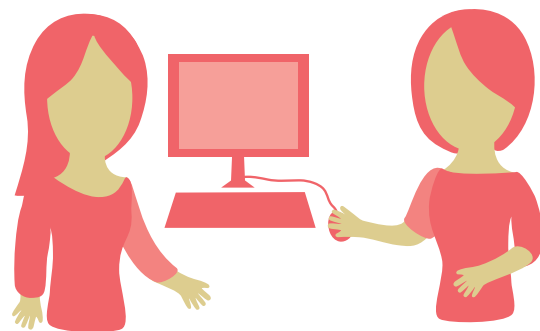
Specially designed questions to get the most truthful answers about high-risk behaviors.

## We Make it Easy to Use

*We know how busy your office is. Our training and support services simplify the process.*

We offer complete support for your team. Family Health Initiatives (FHI) provides on demand training for you and your staff to make it easy.

Ongoing assistance is always available. We are here to answer your questions by email, phone and web.



## Family Health Initiatives

2500 McClellan Avenue, Suite 270  
Pennsauken, NJ 08109  
856-665-6000 | [praspect.org](http://praspect.org)

To get started,  
contact FHI today at  
[pra@fhiworks.org](mailto:pra@fhiworks.org)